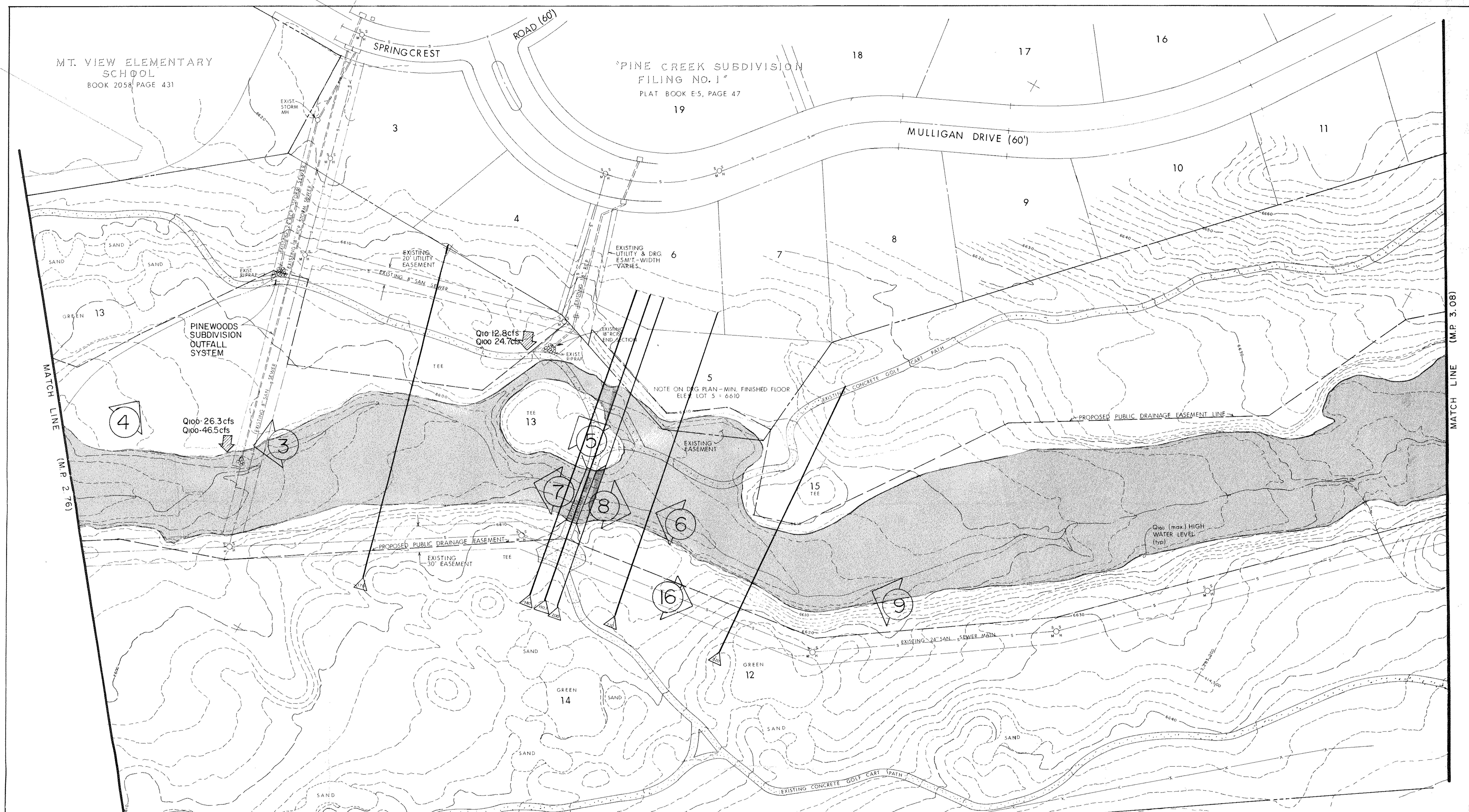


MT. VIEW ELEMENTARY SCHOOL  
BOOK 2058 PAGE 431

'PINE CREEK SUBDIVISION  
FILING NO. 1'  
PLAT BOOK E-5, PAGE 47



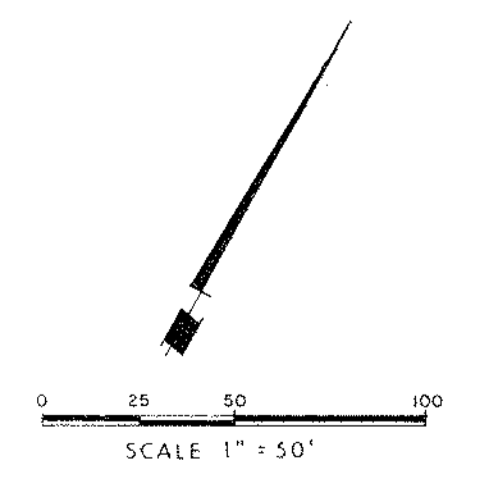
MATCH LINE (M.P. 2.76)

MATCH LINE (M.P. 3.08)

Contour interval: 2' Datum: O/N Briargate/U.S.G.S.

**LEGEND**

- CROSS SECTION DESIGNATION
- CROSS SECTION LOCATION
- DIRECTION OF PHOTO
- PHOTO NUMBER  
PHOTO LOCATION
- Q100 FLOOD LIMITS  
Q100 (max) HIGH WATER LEVEL
- M.P. PINE CREEK MILE POST DESIGNATION



NO.	DATE	REVISION	BY

PROJECT	CORRIDOR PLAN	FILED BOOK NO.	N/A
	M.P. 2.76 to 3.08	SCALE	1"=50'
DATE	1/11/93	DATE	1/11/93
PROJECT	PINE CREEK CORRIDOR - Phase I	DESIGNED BY	CMG
	Detention Facility No. 1 to Chapel Hills Drive	CHECKED BY	RGJ/TLW
		DESIGNED BY	SGB/TLW
		PROJECT NO.	91025-2
<b>Obering, Wurth &amp; Associates</b> Consulting Civil Engineers Professional Land Surveyors 1015 Elton Drive Colorado Springs, Colorado 80907 Phone (719) 531-6200			2 of 3 SHEETS